



**Wolf
Products
Ltd.**

Ingenuity Simplicity Durability

Want your small earth moving equipment to **ACT BIG?**

Wolf prides itself in coming up with creative solutions to solve problems that the market cannot meet.

All New to the Market!

Updated June 2025

Wolf Product Line Catalog

New Inventions by Wolf Products Ltd.



SP23-Heavy

Gravel maintenance has never been so easy !



Wolf Commercial Planers

CP23
Fork System Attachment
(NOT for skid loaders)



Wolf Commercial Planers	1
Game changer in maintaining aggregate roads, lots...	
Wolf Discer 2020	5
Ups the game in DRY & VERY WET terrain management	
Wolf Push-Pull Drag Bar & Soil Planer	7
The ultimate drag bar and soil planer	
Wolf Self-Cleaning Bucket	11
First Bucket that cleans itself	
Wolf Steel Footing Form System	13
Spread Footing Foundation Forms that stand up by themselves	

Text /call us at 204 785-3802
corywolfproductsltd@outlook.com
St. Andrews, Manitoba

You are only as good as your equipment!

Wolf Commercial Planers

Patent Pending

New Inventions by Wolf Products Ltd.

Game changer in maintaining aggregate lots, roads, trails...; lane grooming...

Up & Coming 6 & 7-footers
for Model SP23

As Foreman/Superintendent

Picture this...

With a Wolf Planer, side and back lanes, and tight areas requiring regular grading maintenance become a breeze.

Smaller agile equipment with a Wolf Planer can easily maneuver in areas where a grader can't service.

Ideal for spot fixing, example, RM intersections.

Roughens up and levels ice.

An attachment which will quickly become your choice for most aggregate grading maintenance needs.

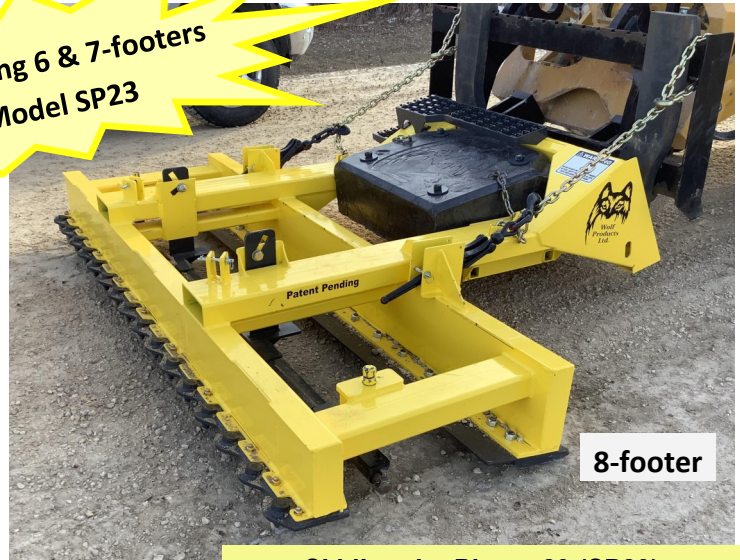
The SP23 Planer hooks up to the majority available equipment on hand, depending on lift capacity.

Loader controls the 3-blade system with its tilt action.

Bolt-on wear blades for easy maintenance; NO hydraulics.

Being a back-up to a grader is a big advantage, especially in remote areas.

Its simplicity and flexibility in selection of equipment makes for a good choice.



SkidLoader Planer 23 (SP23)

with Quick Attach
as well as

Fork System Attachment for other equipment



Even though its functions are different than that of a conventional grader, results compare.

As Councillor/Private Sector

Imagine...

Happy constituents/clients because of well maintained aggregate roadways, lots, etc.

Wolf Commercial Planers' 3 blade-system allows for fast and easy regular aggregate road and lot maintenance. NO pothole formation!

Thus, this system, being superior to anything else, makes for a good regular maintenance choice.

Being an attachment, your budget/break-even can easily subsidize its cost making it a perfect alternative to a grader.

The SP23 model opens opportunity for sub-contracting, since larger skid loaders are common pieces of equipment in the private sector.

The next best thing to a grader at
a fraction of the cost!

It doesn't get any easier!



Commercial Planer 23 (CP23)

Fork System Attachment
(NOT for skid loaders)

See demo videos at [wolf products ltd youtube](https://www.youtube.com/channel/UC...)

Wolf's New Aggregate Maintenance Technology

These attachments are designed for minimal aggregate displacement. Its 3-blade system rips open surface aggregate, levels and lightly compresses it at every pass.

The initial maintenance will be more time consuming having to focus on larger potholes, deeper traffic lanes, etc. Thereafter, regular maintenance intervals can be increased because a Wolf Planer is extremely fast to use and cost efficient. **RESULT: No pothole formation!**

Operating the 3-blade system

Front blade is most effective when back blade is just 1 to 2 inches (2.54 to 5 cm) off aggregate surface.

Intermediate blade assists in spreading loosen aggregate.



The **same is true for the back blade.** It is most effective when front blade is just 1 to 2 inches (2.54 to 5 cm) off aggregate surface.

Maintenance

Wolf believes in simple technology. No hydraulics, no grease points; just steel and concrete.

Bolt-on wear blades for end-user's convenience.

Wolf Commercial Planers fill a niche in the market

Learning curve is minimal.

Periodic aggregate maintenance is a breeze.

A maintained area will always leave a good impression !

Main COMPONENTS for BOTH Models



Front cutting edge carbide tips

Intermediate blade, adjustable

Back blade beveled cutting edge

8-foot (2.44 m) heavy duty steel Main Frame:

- ◇ **front cutting edge with carbide tips** rips open surface layer of aggregate
- ◇ **intermediate blade**, downward adjustable (according to blade wear), assists in spreading loosen aggregate in forward and backward motion
- ◇ **back blade 1 x 8-inch (20.32 cm) slightly beveled cutting edge** to lightly compress aggregate material giving operator an appreciation of the material's somewhat compact state

Model CP23 has a **safety chain hook-up with standard fork attachment** for 3-yard loaders, rubber tire backhoes, tractors and outside forklifts **ONLY. NOT FOR SKID LOADERS.**

Model SP23 has a **quick attach mounting plate** for mid size and larger skid loaders, as well as a **safety chain hook-up with standard fork attachment** for 3-yard loaders, rubber tire backhoes, tractors and outside forklifts.

FORK BLADE TO ACCOMMODATE 4 x 8 x ¼ inch (10.16 x 20.32 x 1.27 cm) rectangular tubing.

Concrete counterweight minimizes required downward pressure leaving the earth moving equipment master of its maneuvers to ACT BIG.

NOTE. Intermediate and back blades supplied by TC Industries.

See demo videos at [wolf products ltd youtube](https://www.youtube.com/channel/UC...)

Wolf Discer 2020

New Inventions by Wolf Products Ltd.

Patent: CA 3,114,455

USA 11,944,033

Ups the game in DRY & VERY WET terrain management



Reclaims $\frac{3}{4}$ down

Turns up deep subsoils performing like a plow
Provides deep cultivation severing root systems

Reclaims, conditions and preps soils in agricultural,
residential, and construction settings

Its **Front Counterweight** assists downward pressures.

Its **Drag bar** allows leveling with cultivation.

Provides a front view for safety and comfort

Lets you thoroughly condition small areas

Provides a thorough mechanical weed control versus
herbicide applications

COMPONENTS

Heavy-duty main **steel frame** (3" sq. $\frac{1}{4}$ " wall tubing [7.62 cm; 0.64 cm]) with a mounting plate for fast and easy hook-up to skid steer loaders/ mid-size tractors

2 gangs of six 18-inch (45.72 cm) by 0.20" (5 mm) serrated or round heavy-duty **disc blades** bolted onto main frame and held in position by four engineered down-brackets

12 extra wide heavy duty **disc blade scrapers** dealing with MOIST to VERY WET soil conditions



Discover the advantages of an aerated worksite

Dare to compare!

Broaden the use of your skid loader/mid-size tractor

Wolf Discer 2020

Provides broader applications and out-performs any other attachment servicing wet soils and outrages weed conditions

Crosses over, and excels, many other attachment functions

Mounts on skid steer loaders/mid-size tractors and opens many NEW opportunities for industry, such as:

- ◇ Weed control from a very untamed to workable soil conditions
- ◇ Automatic soil aeration by turning soils, thus allowing more air flow
- ◇ Mixing soils/deep tilling: stabilizing soil moisture percentage for compaction, etc.
- ◇ Reconditioning aggregated parking lots, driveways, etc.
- ◇ Soil conditioning: prepping for seeding, sodding, etc.
- ◇ Trail blazing: snow-mobile/4-wheeler trails, hunting trails, walk trails, fire breaks, etc.

Cultivates soils anywhere the skid steer loader/mid-size tractor can go

Its extra wide heavy duty disc blade scrapers allow servicing in EXCESSIVELY moist soil conditions.

Simple Mechanics

NO motor NO cylinder NO hydraulic for fast hook-up

SPECIFICATIONS

Wolf Discer 2020

Cutting Width	7' 1" (2.16 m)
Width (Overall)	90.5" (2.3 m)
Length (Overall)	71.5" (1.82 m)
Height (Main frame)	31" (78.74 cm)
Weight (without shields)	1026 lbs (465.4 kg)

Discs

Type	Plain side discs / Notched inner discs
Number	12 discs — 4 plain and 8 notched (variable)
Diameter	18" (45.72 cm) with 1" (2.54 cm) center round hole
Thickness	0.20" (5 mm)

Front Counterweight Kit

Weight	330 lbs (149.7 kg)
Discer Height with Front Counterweight	38" (96.52 cm)

Drag Bar

Weight	136 lbs (61.69 kg)
Width	27.5" (69.85 cm)
Length	88" (2.24 m)

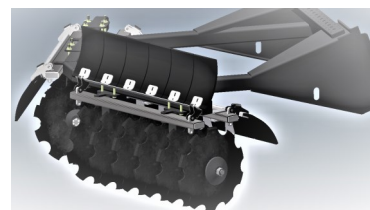
Discer 2020 Drag Bar

Bar ports allow sand to be added for extra weight, depending on terrain.



Optional Wolf Discer 2020 Shield Blade Kit

Simple bolt-on system offers personal protection against injuries.



Teams Up with Wolf Push-Pull Drag Bar & Soil Planer

See demo video at [wolf products ltd youtube](#)

Wolf Push-Pull Drag Bar & Soil Planer

Patent Pending

New Inventions by Wolf Products Ltd.

The ultimate drag bar and soil planer

Teams Up with Wolf Discer 2020

Wolf Push-Pull Drag Bar



Two systems sharing a Main Frame offering the best efficiency for a wide range of applications for today's small earth moving equipment.

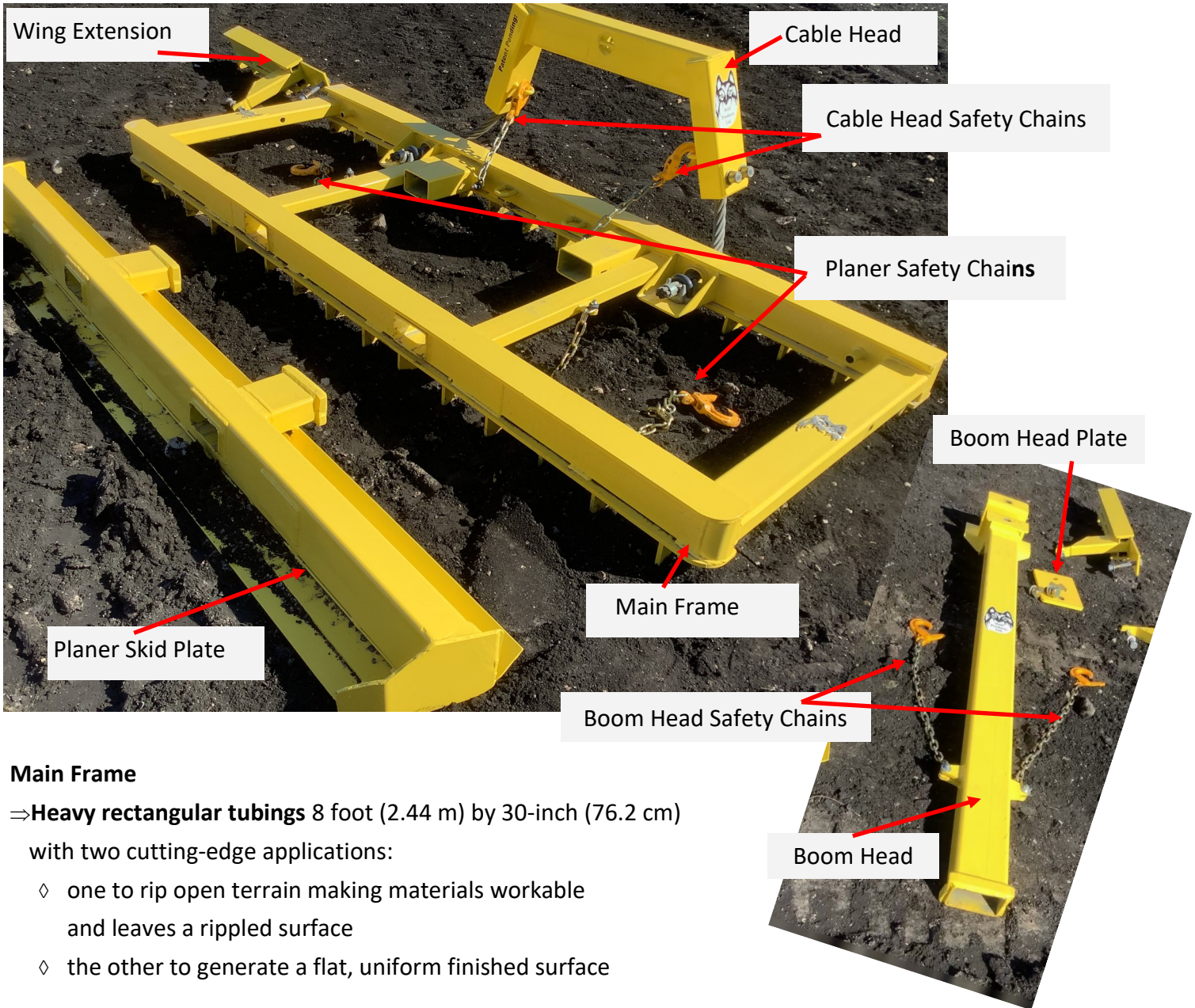
Simple Design

Fork hook-up
Safety chains hook onto fork carriage's main frame
No quick attach No hydraulics

Wolf Push-Pull Soil Planer



COMPONENTS



Main Frame

- ⇒ **Heavy rectangular tubings** 8 foot (2.44 m) by 30-inch (76.2 cm) with two cutting-edge applications:
 - ◇ one to rip open terrain making materials workable and leaves a rippled surface
 - ◇ the other to generate a flat, uniform finished surface

⇒ **Two Cable Head Safety Chains**

⇒ **Two Planer Safety Chains**

Wing extensions to cover more ground

Soil Planer Skid Plate to control aggression of back cutting edge by distributing the weight of the downward boom action

Boom Head which slides onto fork blade

Two Boom Head Safety Chains which hook-up to **fork carriage's main frame**

Bolt-on Boom Head Plate

See demo video at [wolf products ltd youtube](#)

Wolf Push-Pull Drag Bar



Boom Head

- ◇ slides onto a fork blade
- ◇ its safety chains hook onto loader's fork carriage's main frame
- ◇ engages onto Cable Head
- ◇ bolts in with Boom Head Plate



NO quick attach NO hydraulics.



Boom Head controls flotation and activity of **Main Frame**.

Repositioning or transporting of **Main Frame** requires just enough ground clearance to remove interference between **Main Frame** and ground.

Boom Head can be hooked up to **Cable Head** from either side of **Main Frame** allowing operator the choice:



⇒ to **PUSH** the tooth bar cutting edges and **PULL** the straight edges

OR



⇒ to **PULL** the tooth bar cutting edges and **PUSH** the straight edges

With these hook-up options, most of the work can be done in a forward motion providing operator with safety, comfort, and accuracy.

Wolf Push-Pull Drag Bar

Boom Head can move along Cable Head to off-set Drag Bar and change angle of Main Frame.

This motivates material distribution from right-to-left, or vice-versa.

It also allows for an extended reach under trees, objects, etc.

The **Main Frame stands on the ground** to facilitate movement of **Boom Head** along **Cable Head**.



Right



Middle



Left

Wolf Push-Pull Soil Planer

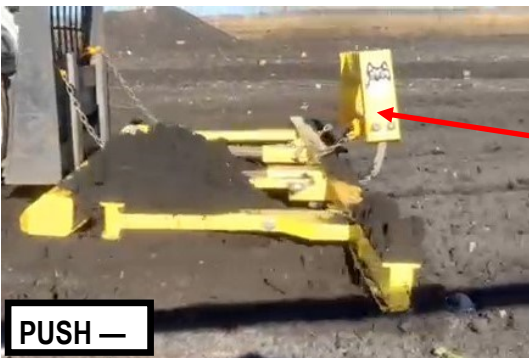
Provides a more aggressive soil displacement as opposed to the Push-Pull Drag Bar, which is designed for finished applications

Displaces a great abundance of soil very quickly

Shaves ground level material from undesired elevations and deposits it where required

Planer's Skid Plate

Controls aggression of back cutting-edge closes to loader by distributing the weight of the downward boom action This leaves operator focusing on managing front cutting edge to maximize Planer's full potential
Generates a flat surface giving operator a good view of soil cuts for final grading; for example, when preparing concrete sub-grading



Fork blades first slide in **Skid Plate** ports, then in **Main Frame** ports.

Planer Safety Chains hook onto fork carriage's main frame

Cable Head disabled for Planer's usage



See demo video at [wolf products ltd youtube](https://www.youtube.com/watch?v=...)

Wolf Self-Cleaning Bucket

New Inventions by Wolf Products Ltd.

Patent: CA 3,026,303
USA 10,544,560

First Bucket that cleans itself

**NO plugging! NO jarring !
JUST DIGGING!
Imagine!**



18-inch Bobcat E35



12-inch TB 216



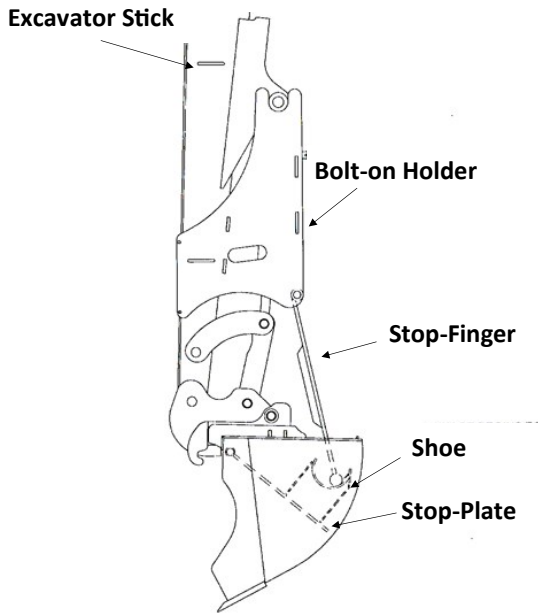
18-inch TB 235



18-inch Kubota U35

Make YOUR excavator up to 50% more efficient.

COMPONENTS



Bucket Innovative STOP-PLATE Insert

Eliminates bucket soil build-up, and therefore

Allows more soil volume per cycle

Requires one simple clean-up for transportation

Functionality

Holder, designed to hold the **Stop-Finger**, bolts onto stick.

Stop-Finger meets **Shoe** attached at back of **Stop-Plate**.

During full bucket dump cycle, **Stop-Plate** is held in position by **Stop-Finger** as bucket cycles backwards.

Stop-Plate then reaches front of bucket and soil drops off giving the illusion that soil is being ejected by **Stop-Plate**.

Wolf Self-Cleaning Bucket

Falls in-line with today's advanced engineering physics design of excavators

Meets all conventional mini-excavator bucket standards

Requires NO alterations to mini-excavator's stick:

- ◇ Bucket **Holder** bolts onto stick as a permanent fixture
- ◇ **Stop-Finger** can be secured in **Holder** allowing conventional attachment hook-ups

NO added hydraulics

No jarring reduces operator's fatigue.

Plugging of backhoe bucket frustration goes back to day 1, in 1930, when first backhoe was patented.

SPECIFICATIONS

The total weight of attachment depends on bucket size.

An 18" (45.72 cm) heaping bucket has a capacity of 3.3 cubic feet.

With 1" (2.54 cm) of soils stuck on plate, bucket capacity loss is 6.7%.

See demo video at [wolf products ltd youtube](#)

Wolf Steel Footing Form System

USA Patent 853592

New Inventions by Wolf Products Ltd.

Spread footing foundation forms that stand up by themselves

Functionality

Skid loader performs majority of procedures

45° chamfer panels offer minimal deflection and allow vibrating of concrete

Assembly guarantees respect of true configuration dimensions

Reduces concrete volume

Requires no wood products offering major savings on manual labor



*Instead of working hard,
WORK HARDLY*



Just grab your trailer and go!

All components transported as one unit to site

No missing products No work interruption

No annoyance!

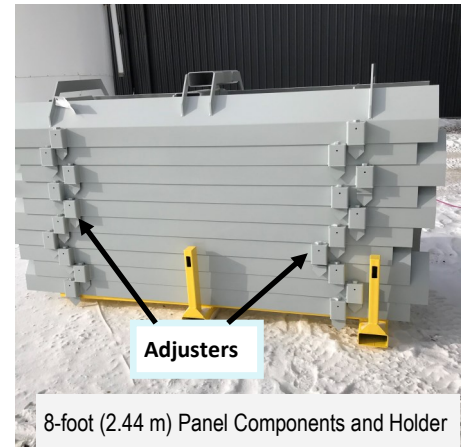
wolfproductsltd.com
corywolfproductsltd@outlook.com

Components

8-foot (2.44 m) steel panel components made from an outside and inside panel joined at three points.

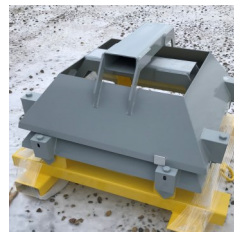
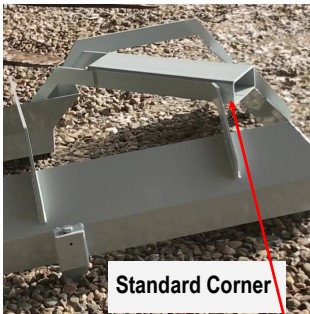
Components overlap to slip-connect with 1 to 12-inch (2.54 to 30.48 cm) allowance, depending on required dimensions.

Additional singular 8-foot (2.44 m) panels, with same configuration as panel components, used inside and outside 8-foot (2.44 m) panel components. **Easily clamped-on**, used as fill-ins to produce a continuous structural panel form, thus removing any gap between 8-foot (2.44 m) panel components to meet schematic designs.



Each component has innovative elevation adjusters (rotating steel treaded rod in conjunction with spike anchor).

Corner components follow the same slip-connect design with a 1 to 6-inch (2.54 to 15.24 cm) overlap allowance, making them compatible.



Telepost center pad component
for interior supports

All components are bend to a **45° chamfer** accommodating a bevel on both sides of spread-board.

Each component has a **receiver** that **loader fork enters to maneuver component**, removing manual labor.

Steel carriers (shown in yellow) allow component stacking, compressing system for safe and easy transportation.

All components create complete green footing system.

Easy to install — Easy to remove

SPECIFICATIONS

Weight

Individual 8-foot (2.44 m) Panel	140 lbs (63.5 kg)	Standard Corner	105 lbs (47.63kg)
8-foot (2.44 m) Panel Holder	TBD	Standard Corner Holder	215 lbs (97.5 kg)
Additional Singular 8-foot (2.44 m) Panel	35 lbs (15.9 kg)	2-foot (60.96 cm) Offset Corner	135 lbs (61.2 kg) [sits on palette]
		Telepost Pad	95 lbs (43.1 kg)
		Telepost Pad Holder	190 lbs (86.2 kg)

See demo video at [wolf products ltd youtube](#)



Ingenuity Simplicity Durability

About Wolf Products Ltd.

Wolf Products Ltd. is an *Innovative Design Entity* which brings alternative winning solutions to the small earth moving equipment industry making its equipment Act BIG.

Operators are asking for solutions.

Wolf's Philosophy

Simple is Smart!

Wolf believes in using the simplest mechanical technology for its attachment designs to deliver high performance, durability, and longevity, because

you are only as good as your equipment!

Wolf steel attachments' durability and longevity save the end-user costly downtime in the field and over a long lifespan.

Wolf's experience as an end-user in construction believes that

you do not work for the machine; the machine works for you.

Wolf's Designer

Wolf's designer, Cory Halischuk with 38 years of self-employment in construction, says that:

The workplace has always been a design arena for me, and with construction consuming a major part of my work life, it has taught me that there is always a faster, minimal labor, and less expensive way to do things. Therefore, when confronted with a problem that the market cannot meet, I design.

See website at
wolfproductsltd.com

**Text or call us today at 204 785-3802
or Email at corywolfproductsltd@outlook.com**